



FLIGHT CASE PIONEER SET PLX9/SL1200 PLUS (LAPTOP SHELF + WHEELS)

U91028BL2, U92028SL

UDG Ultimate Flightcases not only transport your complete set up easily & securely, but also facilitates devices to be setup within minutes. With these premium features incorporated, the UDG Ultimate Flightcases provides premium professional quality in a very stylish modern black/silver colored combination.

FEATURES

- Fits: 2x Pioneer PLX-1000 / Technics SL1200 turntable and 1x Pioneer DJM-S9 Mixer + 1 x Laptop + Accessories
- Improved powder coated and anodized hardware
- High density diamond embossed EVA foam & carpeted protective padding
- Dual anchor rivets with included washer
- Convenient 80 mm space at rear for connections & PSU storage
- Cable access hole with removable UDG emblem cover
- Removable cable & PSU storage cover panel
- Removable front access panel
- Built-in corner wheels with high quality in-line skate bearings for convenient transport
- Adjustable laptop shelf
- Heavy duty construction of 9 mm thick plywood
- Laminated in a black finish with a honeycomb/hexagonal "Stage Grip" pattern
- Extra-wide solid aluminum profiles
- High grade aluminium UDG logo plate
- UDG heavy-duty spring-loaded handles
- Secure stacking due to stackable ball corners
- Sturdy construction
- Recessed butterfly twist latch lock

DIMENSION		WIDTH	HEIGHT	DEPTH
OUTER	CM	134.5	51	23
	INCH	52.9	20.1	9
INNER TURNTABLE COMPARTMENT	CM	45.4	38.7	7.6
	INCH	17.8	15.2	2.9
INNER MIXER COMPARTMENT	CM	47	27.7-39.5	7.6
	INCH	18.5	10.9-15.5	2.9
WEIGHT		25 kg	55 lbs	



BLACK/SILVER
U92028SL



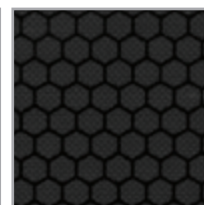
BLACK MK2
U91028BL2



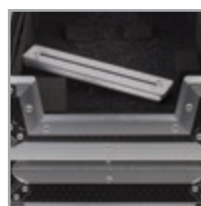
High grade aluminium
UDG logo plate



Improved powder coated
and anodized hardware



Laminated in a black finish
with a honeycomb/hexagonal
"Stage Grip" pattern



Removable front access
panel



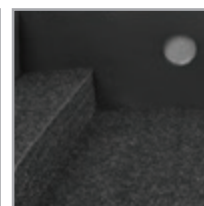
An extra notebook shelf
included for your
notebook



Built-in corner wheels
with high quality in-line
skate bearings



Removable cable & PSU
storage cover panel



High density diamond
embossed EVA foam &
carpeted protective padding



Cable access hole with
removable UDG emblem
cover